

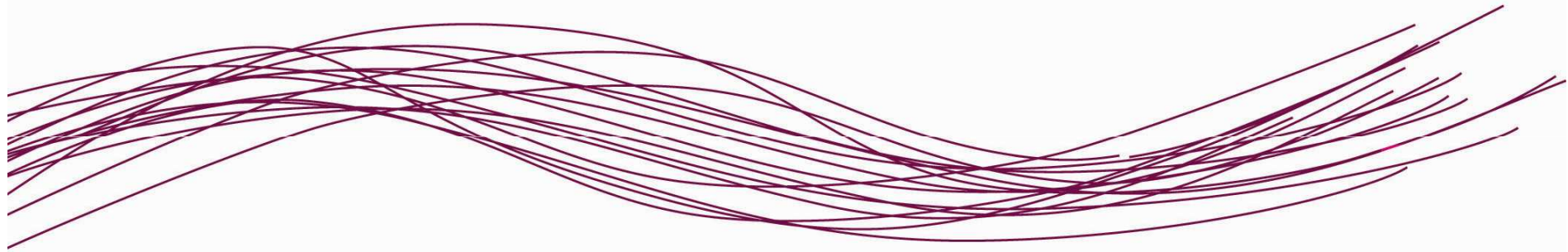


EUROPEAN  
COMMISSION

Community research

# "People" Programme : The Marie Curie Actions in FP7

*26 January 2009, TÜBİTAK, Ankara*



European Commission

Research DG

Marie Curie Actions – Fellowships

Brito FERREIRA





EUROPEAN  
COMMISSION

Community research

# Content

1. What's new in FP7?
2. Brief structure of the "People" programme
3. Marie Curie Actions – Networks
4. Marie Curie Actions – Individual actions
5. Key facts Turkey





EUROPEAN  
COMMISSION

Community research

## Marie Curie Actions in FP7: **What's New in FP7**

1. Duration increased from 5 to 7 years
2. Annual budget increased
3. Fundamental to applied research
4. New structure:

**cooperation, ideas, people, capacities, euratom**





EUROPEAN  
COMMISSION

Community research

## Marie Curie Actions in FP7: Evolution

### ***Budget:***

- Budget of € 4,75 billion over 7 years (2007-2013 period)
- Increase of 50% yearly in average (€ 0.68 Billions/year against 0.45 in FP6)
- Risk sharing finance facility

### ***How to cope with this increased budget:***

- Administration: Externalisation to an executive agency
- Co-funding of national and regional programs
- Simplification





EUROPEAN  
COMMISSION

Community research

## Marie Curie Actions in FP7: The 4 Pillars in Brief

*Cooperation* – Collaborative research

*Ideas* – Frontier Research

*People* – Marie Curie Actions

*Capacities* – Research Capacity

+

JRC (non-nuclear)

JRC (nuclear)

Euratom





EUROPEAN  
COMMISSION

Community research

## Marie Curie Actions in FP7: **Objectives**

### **Objectives**

- Attract/retain numerous, well-trained, motivated researchers in Europe
- Continuity of FP6, with focus on structuring impact
- Development of **adequate and broad skills** for both the private and public sector; increased **private sector** participation
- Sustainable **career development**
- Strengthen **international** dimension



- **No thematic priorities**





EUROPEAN  
COMMISSION

Community research

# Content

1. What's new in FP7?
2. Brief structure of the "People" programme
3. Marie Curie Actions – Networks
4. Marie Curie Actions – Individual actions



5. Key facts Turkey





EUROPEAN  
COMMISSION

Community research

# Marie Curie Actions in FP7: Presentation

## 1. Initial training:

- *Networks for Early stage researchers\**

## 2. Life long training and career development:

- *Intra European Fellowships\**
- *European Reintegration Grants*
- *Co-funding of national programmes\**

## 3. Industry dimension:

- *Industry-academia partnership and pathways\**

## 4. International dimension:

- *Outgoing fellowships*
- *Incoming fellowships\**
- *International reintegration grants*
- *International staff Exchange Programmes\**

## 5. Specific actions

*Such as: 'Researchers' Night'; ERA-More...*



\* Open to third-country nationals





EUROPEAN COMMISSION

Community research

# Marie Curie Actions in FP7: Overview

## Applicants

Individual fellowships

Industry/Research Institutions

Research funding bodies

Profile of recruited researchers

Senior Post-docs

> 10 years

Post-docs

> 4 years

Post-graduates

< 4 years

ERG  
IRG  
IIF

IOF  
IEF

IAPP

ITN

COFUND

IRSES





EUROPEAN  
COMMISSION

Community research

## Marie Curie Actions in FP7: Main Features

### ***Main Features:***

- Trans-national mobility
- Industry/Academic participants
- Young to advance researchers
- Host-fellow collaboration, S&T quality, training and transfer of technology
- Variable durations (from 12 to 48 months)
- No thematic (Panel Concept)

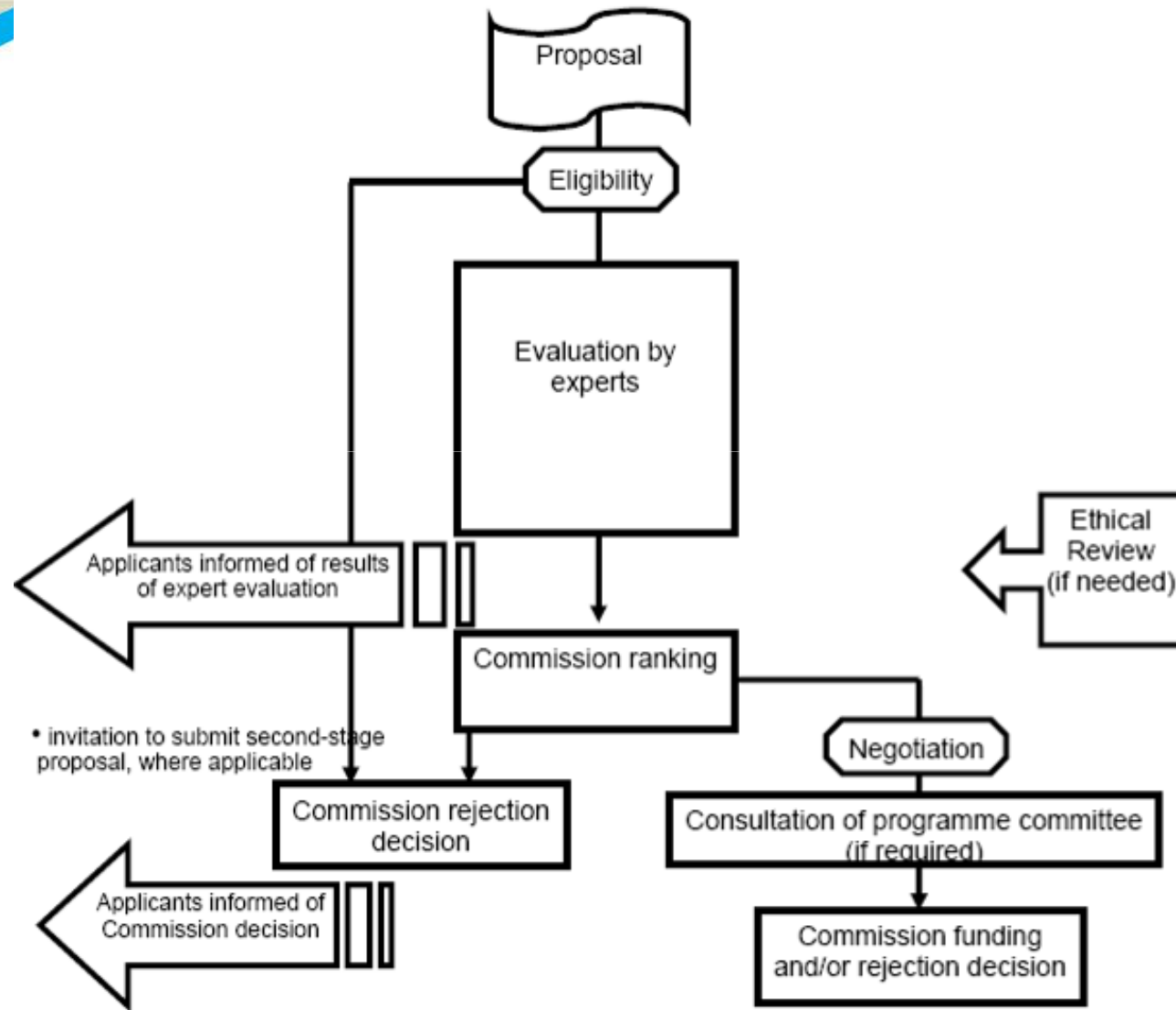




EUROPEAN  
COMMISSION

Community research

# Marie Curie Actions in FP7: Selection



• invitation to submit second-stage proposal, where applicable





EUROPEAN  
COMMISSION

Community research

## Marie Curie Actions in FP7: **Community Contribution**

### ***Community Contribution:***

- Eligible expenses for the researchers
  - ↳ Monthly living and mobility allowances\*
  - ↳ Travel allowance\*
  - ↳ Contribution to the expenses of the researchers
- Eligible expenses for the host organisation
  - ↳ Research/training/transfer of Knowledge\*
  - ↳ Management activities
  - ↳ Contribution to overheads

Fixed amount (IRSES)

\* When applicable





EUROPEAN  
COMMISSION

Community research

# Content

1. What's new in FP7?
2. Brief structure of the "People" programme
3. Marie Curie Actions –  
Networks
4. Marie Curie Actions – Individual actions
5. Key facts Turkey





EUROPEAN  
COMMISSION

Community research

## Marie Curie Actions in FP7: **Initial Training Network**

### ***Objectives:***

- Strengthen and structure Initial Training of Researchers at European level
- Attract students to scientific careers
- Improve career perspectives by broad skills development (including private sector needs)
- Directed at early-stage researchers





EUROPEAN  
COMMISSION

Community research

## Marie Curie Actions in FP7: **Initial Training Network**

### ***Main Features:***

- Transnational to International network of 3 participants
- Joint Research Training Programme:
  - (i) training through research
  - (ii) complementary competences modules
  - (iii) exposure to both public and private sectors
- Industry involvement
- Mutual recognition of the quality of the training
- Four years contracts maximum
- Available positions will be published by the Initial Training Networks on ERACAREERS:  
[http://ec.europa.eu/euraxess/index\\_en.cfm](http://ec.europa.eu/euraxess/index_en.cfm)





EUROPEAN  
COMMISSION

Community research

## Marie Curie Actions in FP7: Initial Training Network

### *Who are the participants:*

- National organisations (e.g. universities, research centers whether private or public)
- Commercial enterprises, especially SMEs
- Non-profit or charitable organisations (NGOs, trusts, etc...)
- International European Interest Organisations (CERN, EMBL, ...)
- The Joint Research Centre of the EC
- Early stage researchers ( $\leq 5$  years)
- Experienced researchers ( $\geq 4$  years)
- Scientific visitors





EUROPEAN  
COMMISSION

Community research

## Marie Curie Actions in FP7: Industry Academia Pathway Partnership

### ***Objectives:***

- **Foster co-operation** - public research organisations & private commercial enterprises based on joint research projects
- **Stimulate long-term collaboration** between sectors through secondment of researchers between the public & private research domains
- **Diverse career possibilities & research experience** for researchers, knowledge sharing/cultural exchange





EUROPEAN  
COMMISSION

Community research

Marie Curie Actions in FP7:

## Industry Academia Pathway Partnership

### ***Main Features:***

- **Compulsory Secondment of staff**
  - ↳ Majority of support in IAPP
  - ↳ Always inter-sector
  - ↳ Up to 30% for secondments within 1 country
- **Optional Recruitment of experienced researchers**
  - ↳ Not substitute for secondment
- **Networking activities**
  - ↳ workshops & conferences, participants' own research staff & external researchers
- **Four years contracts maximum**



Available positions will be published by the partnership on ERACAREERS: [http://ec.europa.eu/euraxess/index\\_en.cfm](http://ec.europa.eu/euraxess/index_en.cfm)





EUROPEAN  
COMMISSION

Community research

## Marie Curie Actions in FP7: **Industry Academia Pathway Partnership**

### ***Who are the participants:***

- 1+ universities/research centre – PUBLIC SECTOR
- 1+ enterprises – PRIVATE SECTOR
- Minimum 1 from each sector from MS+MS/AC
- Additional participants from anywhere in world (ICPC, OTC)
- Research staff and technical & managerial staff of all levels of experience





EUROPEAN  
COMMISSION

Community research

# Content

1. What's new in FP7?
2. Brief structure of the "People" programme
3. Marie Curie Actions – Networks
4. Marie Curie Actions – Individual actions



5. Key facts Turkey





EUROPEAN  
COMMISSION

Community research

## Marie Curie Actions in FP7: Individual Marie Curie Actions

### *Main Features:*

- **Trans-national mobility** within Member States (MS) or Associated Countries (AC)
- Research activities must be carried out in a MS or AC other than the one of the researcher's nationality
- Application submitted by the researcher in conjunction with the host organisation
- Project duration: **12 up to 24 months** (up to 36 for ERG)
- **No thematic** (bottom up approach)





EUROPEAN  
COMMISSION

Community research

## Marie Curie Actions in FP7: Individual Marie Curie Actions

### *Who are the participants:*

- Researchers of any Nationality\*
  - ↳ Doctorate degree
  - ↳ 4 years of full time research experience
- Host organisation in MS or AC
- Active in research in MS/AC (IEF/IOF) or in TC (IIF)
- **Mobility rule:** Have not resided or carried out their main activity in the country of the host more than 12 months in the 3 years before relevant deadline



*\* exception: IOF researchers National of a Member State or Associated Country*





EUROPEAN  
COMMISSION

Community research

## Marie Curie Actions in FP7: Individual Marie Curie Actions

### *Objectives: Intra European*

- Life long Training and Career Development
  - ↳ Intra European Fellowships (IEF)
  - ↳ European Reintegration Grants (ERG)
  - ↳ Co-Funding of Regional, National and International Programmes (COFUND) **NEW**
- Support career development of experienced researchers
- Enhance individual competence **diversification** – skills acquisition at multi-interdisciplinary level and/or intersector level
- Support researchers in attaining and/or strengthening a leading independent position or resume a career in research after a break





EUROPEAN  
COMMISSION

Community research

## Marie Curie Actions in FP7: **Individual Marie Curie Actions**

### ***Objectives: International Dimension***

- Life long Training and Career Development
  - ✚ International Incoming Fellowships (IIF)
  - ✚ International Reintegration grants (IRG)
  - ✚ International Outgoing Fellowships for Career Development (IOF)
  - ✚ International Staff Exchange Scheme (IRSES) **NEW**
- Reinforce the international dimension of the career of European researchers by training and acquisition of new knowledge in a Third Country (TC)
- Reinforce the attractiveness of Europe
- Develop mutually beneficial research co-operation between Europe and TC





EUROPEAN  
COMMISSION

Community research

# Content

1. What's new in FP7?
2. Brief structure of the “People” programme
3. Marie Curie Actions – Networks
4. Marie Curie Actions – Individual actions
5. Key facts Turkey





EUROPEAN  
COMMISSION

Community research

## Marie Curie Actions in FP7: Calls for 2009

Some dates and figures for 2009			
Action	Call Publication	Call Deadline	Budget
<b>ITN</b>	<b>No call in 2009</b>		
<b>IAPP</b>	24 April 2009	27 July 2009	€ 65 M
<b>IEF</b>	18 March 2009	18 August 2009	€ 95 M
<b>COFUND</b>	19 November 2008	19 February 2009	€ 65 M
<b>IRSES</b>	25 November 2008	27 March 2009	€ 30 M
<b>RG</b>	9 October 2008	2 April / 8 October 2009	€ 31 M
<b>IIF</b>	18 March 2009	18 August 2009	€ 28 M
<b>IOF</b>	18 March 2009	18 August 2009	€ 28 M
<b>Researcher's night</b>	14 October 2008	14 January 2009	€ 3 M





EUROPEAN  
COMMISSION

Community research

## Marie Curie Actions in FP7: Contacts

Marie Curie Actions	Name	E-mail
Individual fellowships (IEF, IIF, IOF) (ERG, IRG) COFUND & IRSES ITN IAPP Researchers' Night	Karim BERKOUK Fredrick HECTOR OLSSON Alessandra LUCHETTI Jean-Bernard VEYRET Graham WILKIE Colette RENIER	karim.berkouk@ec.europa.eu fredrick.hector-olsson@ec.europa.eu alessandra.luchetti@ec.europa.eu jean-bernard.veyret@ec.europa.eu graham.wilkie@ec.europa.eu colette.renier@ec.europa.eu





EUROPEAN  
COMMISSION

Community research

## Marie Curie Actions in FP7: WebPages

- PEOPLE Webpage:  
<http://ec.europa.eu/research/mariecurieactions/index.htm>
- Seventh Framework Programme:  
[http://cordis.europa.eu/fp7/home\\_en.html](http://cordis.europa.eu/fp7/home_en.html)
- European Researchers - Mobility Portal:  
[http://ec.europa.eu/euraxess/index\\_en.cfm](http://ec.europa.eu/euraxess/index_en.cfm)
- EU Calls for proposals:  
<http://cordis.europa.eu/fp7/dc/index.cfm>
- FAQ on FP7 in General  
<http://ec.europa.eu/research/index.cfm?pg=faq&lg=en>





EUROPEAN COMMISSION

Community research

# Marie Curie Actions in FP7: WebPages



- Home
- Jobs
- Services
- Rights
- Links



European Researchers - Mobility Portal:  
[http://ec.europa.eu/euraxess/index\\_en.cfm](http://ec.europa.eu/euraxess/index_en.cfm)

Marie Curie Webpage:  
<http://ec.europa.eu/research/mariecurieactions/index.htm>

European Commission RESEARCH

European Commission > Research > Marie Curie Actions

**Welcome to the Marie Curie Actions**

**Career Opportunities for Researchers**  
anytime - anyplace - anywhere

**Careers**

- Job vacancies
- Publish a job vacancy
- Taking control of your career

**Funding**

- WHAT are the Marie Curie Actions
- WHICH actions are suited for me
- HOW to apply
- WHEN to apply
- WHERE is my application
- HOW TO manage my project
- WHY? find your answers in the FAQs

**Policies**

- EURAXESS Researchers in motion
- European policies for researchers
- The European Charter 4 Researchers and the Code of Conduct 4 their Recruitment
- Europe4Researchers Newsletter





EUROPEAN  
COMMISSION

Community research

# Thank you for your attention

[brito.ferreira@ec.europa.eu](mailto:brito.ferreira@ec.europa.eu)

